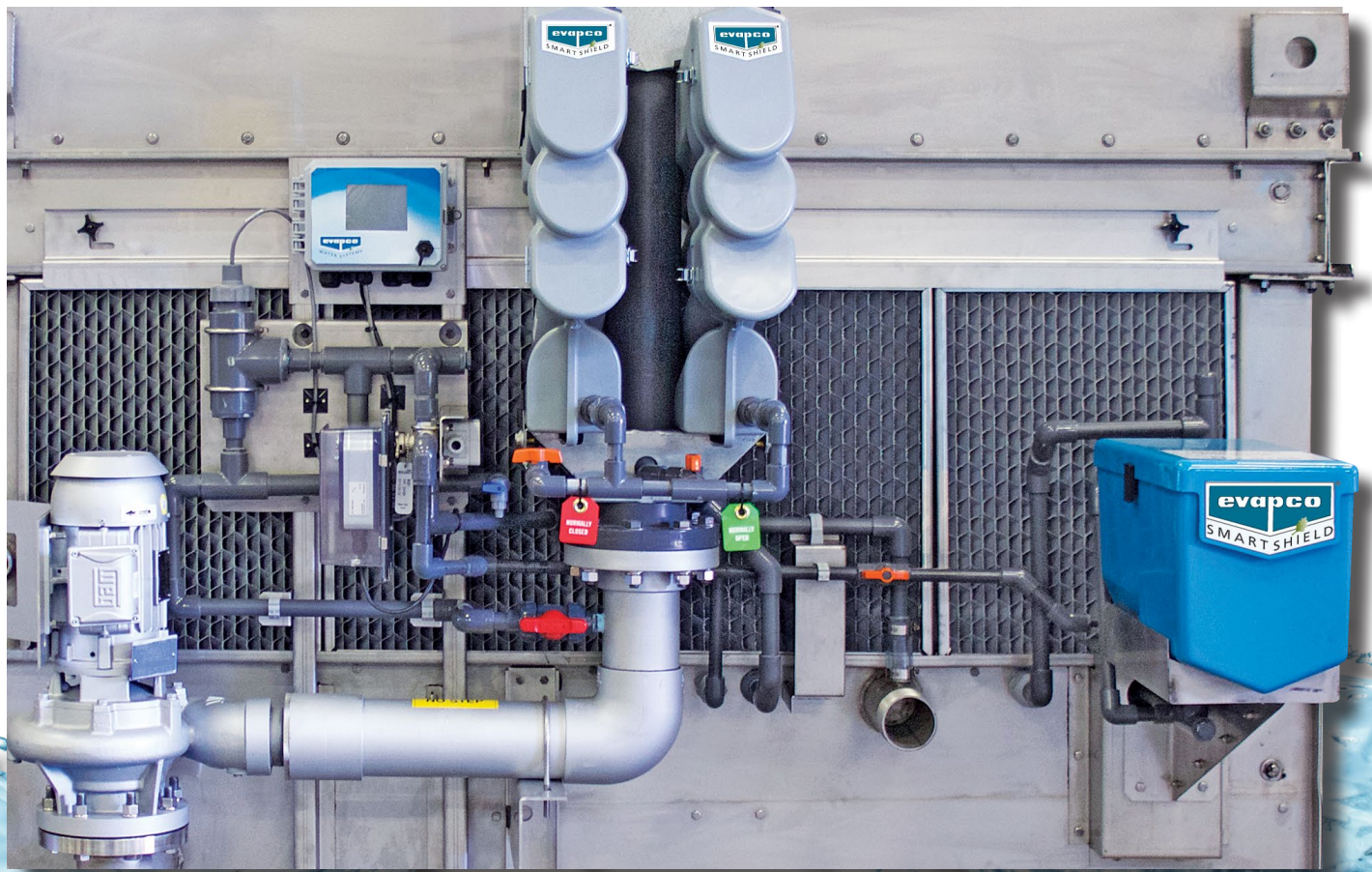


Smart Shield®

WATER SYSTEMS



FACTORY ASSEMBLED SOLID CHEMISTRY
WATER TREATMENT SYSTEM
For Closed Circuit Coolers and Evaporative Condensers



EVAPCO WATER SYSTEMS ENGINEERING

The Wilson E. Bradley Global Research & Development Center incorporates laboratories for water analyses and state of the art environmentally controlled testing. These laboratories provide unique capabilities for advanced water systems research on full-scale operating equipment.

This state of the art research and development center has over 60,000 square feet dedicated to full scale thermal analysis and product development. EVAPCO's Smart Shield System was developed and tested utilizing these unique facilities.

EVAPCO's Water Systems division focuses on the application and ongoing development of water treatment systems as well as research on passivation and corrosion. This division utilizes advanced technologies and equipment in the field of analytical chemistry, including Ion Chromatography and Atomic Absorption Spectroscopy, giving EVAPCO the ability to conduct fast and accurate analyses of chemical, non-chemical, and hybrid water treatment systems.

Get to Know EVAPCO

- The global innovator in heat transfer solutions
- Serving the commercial HVAC, Industrial Refrigeration, Power Generation, and Industrial Process markets
- Founded in 1976
- Employee-owned
- 33 locations in 14 countries
- More than 200+ sales offices worldwide

Learn More Now.

Visit evapco.com to download product catalogs, view complete product specifications, and more.



EVAPCO's Water Analytical Services



SMART SHIELD®

Factory-Mounted Solid Chemistry Water Treatment

EVAPCO Conductivity Controller 2 (ECC-2)

- Second generation controller with enhanced data acquisition capabilities
- Maximizes water efficiency
- Factory mounted, piped and wired - simple 120/230 VAC field power connection is all that is required
- Features a low maintenance Toroidal probe and reliable motorized ball valve



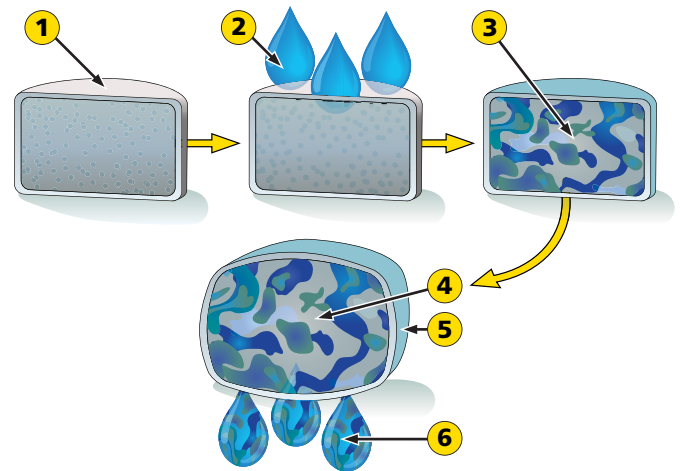


Factory Mounted Feeder (FMF)

- Each feeder is engineered specifically for the size of your closed circuit cooler or evaporative condenser
- Easiest corrosion and scale inhibitor replenishment in the industry
- Patented technology controls the release of inhibitor chemistry over a 30-day period



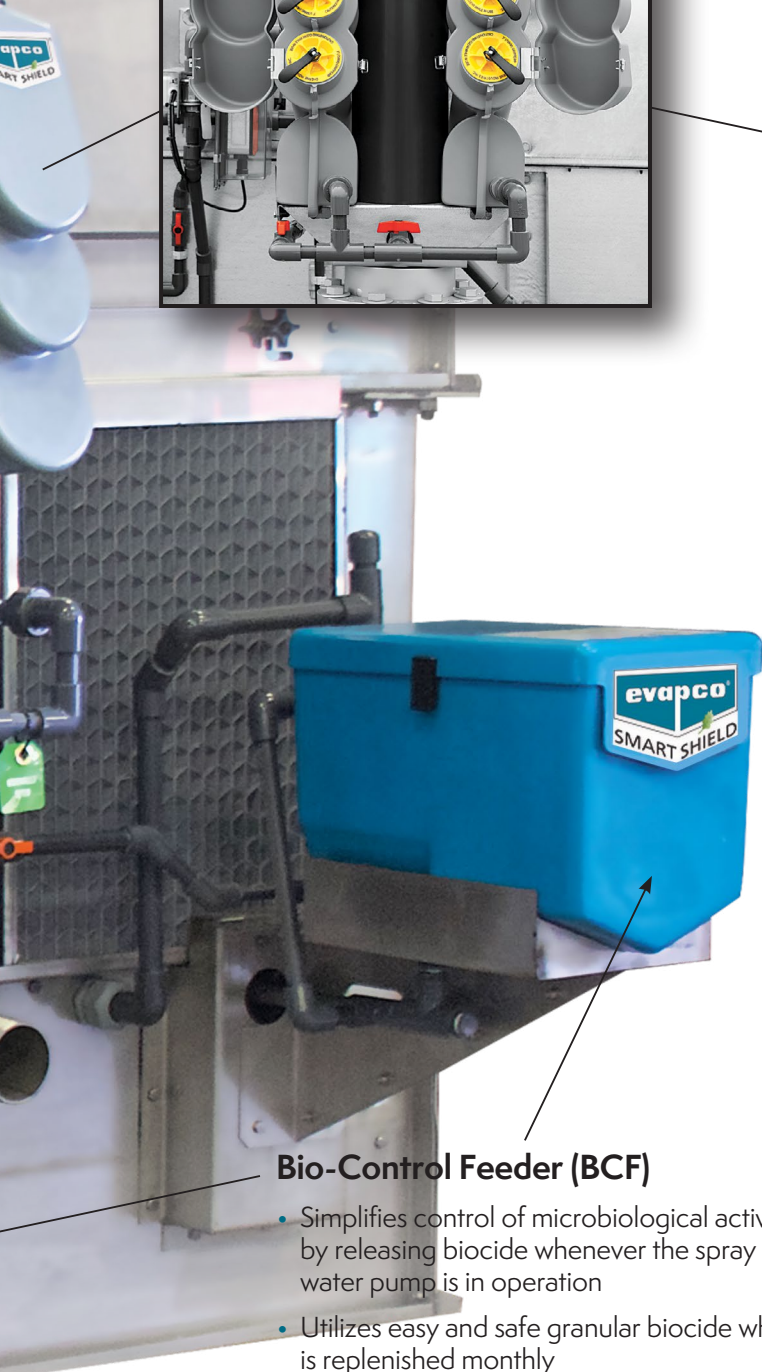
Inhibitor Operation



- 1 Polymer coated inhibitor tablet
- 2 Recirculated water permeates the polymer coating
- 3 Solid chemistry becomes a slurry inside the tablet
- 4 Osmotic pressure causes the tablet to swell, forcing the chemistry out through the polymer coating
- 5 Polymer coating controls the treatment release rate
- 6 Treated water returns to the basin

Bio-Control Feeder (BCF)

- Simplifies control of microbiological activity by releasing biocide whenever the spray water pump is in operation
- Utilizes easy and safe granular biocide which is replenished monthly
- Integrated membrane technology controls release of chemistry
- Factory mounted and piped on coil products utilizing EVAPCO's patented self draining design (U.S. Patent # 8,093,917)

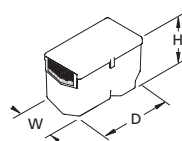
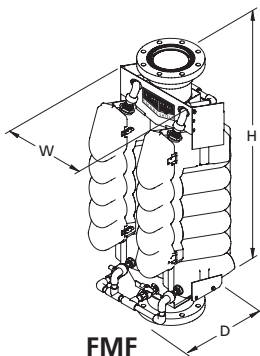


SMART SHIELD® BENEFITS

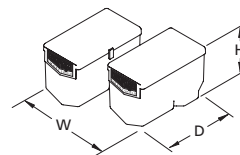
- Includes all the components required for an effective water treatment system, factory mounted and wired on EVAPCO closed circuit coolers and evaporative condensers.
- Controlled release chemistry provides uniform treatment over a 30 day period.
- EVAPCO Conductivity Controller 2 automates the blowdown process maximizing water efficiency.
- Solid chemistry provides reduced packaging, shipping and handling compared to liquid products assuring a lower carbon footprint.
- Solid products eliminate the potential for liquid spills making them easier and safer to apply.

Engineering Data

Smart Shield Component		Dimensions in (mm)			Shipping Weight lb. (kg)	Operating Weight lb. (kg)	Blow Down Valve Size in (mm)
		D	W	H			
FMF	FMF-6-3	19 (480)	13 (330)	43 (1090)	44(20)	111 (50)	3/4 (20)
	FMF-6-4	19 (480)	14 (360)	43 (1090)	49 (22)	116 (53)	3/4 (20)
	FMF-10-6	19 (480)	17 (430)	49 (1245)	75 (34)	165 (75)	3/4 (20)
	FMF-10-8	19 (480)	18 (460)	51 (1290)	95 (43)	185 (84)	1 (25)
BCF	BCF-10	17 (430)	9 (230)	12 (305)	30 (14)	34 (15)	n/a
	BCF-20	17 (430)	25 (630)	12 (305)	60 (27)	69 (31)	n/a



BCF-10



BCF-20



Full Spectrum of Water Treatment Solutions



Water Saver
Pre-Treatment System



Pulse-Pure
Non-Chemical Treatment



Smart Shield
Factory Mounted
Solid Chemistry
Water Treatment



Factory Assisted Passivation
Galvanized Coil Treatment



Smart Shield
For Open Towers and
Remote Sump Applications



www.evapco.com

Contact your local EVAPCO Sales Representative or EVAPCO® Headquarters for more information.



EVAPCO, Inc.
World Headquarters

5151 Allendale Lane
Taneytown, MD 21787 USA
410-756-2600
E-mail: marketing@evapco.com

EVAPCO Europe, BV
European Headquarters

Industrieterrein Oost 4010
3700 Tongeren, Belgium
(32) 12-395029
E-mail: evapco.europe@evapco.be

EVAPCO Asia/Pacific Headquarters

1159 Louning Rd., Baoshan Industrial Zone
Shanghai, P.R. China, Postal Code: 200949
(86) 21-6687-7786
E-mail: marketing@evapcochina.com

Visit EVAPCO's Website: evapco.com

©2024 EVAPCO, Inc. All Rights Reserved
Printed on recycled paper using soy based inks

